

WATTLE

Acacias of Australia

Acacia spinescens Benth.



Source: Australian Plant Image Index (dig.38964).
ANBG © M. Fagg, 2015



Source: Australian Plant Image Index (dig.35323).
ANBG © M. Fagg, 2014



Source: Australian Plant Image Index (dig.35324).
ANBG © M. Fagg, 2014



Source: Australian Plant Image Index (dig.38706).
ANBG © M. Fagg, 2015



Source: Australian Plant Image Index (dig.38864).
ANBG © M. Fagg, 2015



Source: Australian Plant Image Index (dig.38865).
ANBG © M. Fagg, 2015



Source: WorldWideWattle ver. 2.
Published at: www.worldwidewattle.com
B.R. Maslin



Source: WorldWideWattle ver. 2.
Published at: www.worldwidewattle.com
B.R. Maslin



Source: Australian Plant Image Index (a.31324).
ANBG © M. Fagg, 2004



Source: Australian Plant Image Index (dig.35325).
ANBG © M. Fagg, 2014



Source: Australian Plant Image Index (dig.35326).
ANBG © M. Fagg, 2014



Source: Australian Plant Image Index (dig.38707).
ANBG © M. Fagg, 2015



Source: Australian Plant Image Index (dig.38708).
ANBG © M. Fagg, 2015



Source: Australian Plant Image Index (dig.38709).
ANBG © M. Fagg, 2015



Source: Australian Plant Image Index (dig.38866).
ANBG © M. Fagg, 2015



Source: Australian Plant Image Index (dig.38867).
ANBG © M. Fagg, 2015



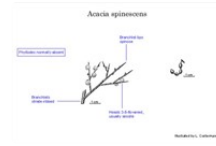
Source: Australian Plant Image Index (dig.38868).
ANBG © M. Fagg, 2015



Source: Australian Plant Image Index (dig.38869).
ANBG © M. Fagg, 2015



Source: WorldWideWattle ver. 2.
Published at: www.worldwidewattle.com
B.R. Maslin



Source: WorldWideWattle ver. 2.
Published at: www.worldwidewattle.com
See illustration.



Source: WorldWideWattle ver. 2.
Published at: www.worldwidewattle.com
See illustration.



Source: WorldWideWattle ver. 2.
Published at: www.worldwidewattle.com
See illustration.



Source: WorldWideWattle ver. 2.
Published at: www.worldwidewattle.com
See illustration.



Acacia spinescens occurrence map.
Occurrence map generated via Atlas of Living Australia (<https://www.ala.org.au>).

Common Name

Spiny Wattle, Hard-leaf Wattle

Family

Fabaceae

Distribution

Occurs from near Ceduna, S.A. to Mildura and the Northern Grampians, western Vic.

Description

Much-branched **erect shrub** mostly 0.5–1 m high. **Branchlets rigid, terete**, striated by rather prominent yellow ribs, green, grey-green or subglaucous between ribs, **glabrous, spinose**. Phyllodes normally absent, very rarely a few **persistent** at base of main stems, **linear**, 1–5 cm long, 1–2 mm wide, thick, **curved** or hooked apically. Inflorescences **simple**; heads usually \pm **sessile, globular**, 3–8-flowered, 5–7 mm diam., bright golden; bracteoles **sessile**, concave, c. 1 mm long and almost as wide, brown. Flowers **5-merous**; sepals united. Pods **moniliform, curved**, becoming twisted, 2–3 cm long, 2–3 mm wide, dark brown, **glabrous**. Seeds **longitudinal, oblong-elliptic; aril clavate**.

Habitat

Grows in a variety of vegetation and soil types.

Specimens

S.A.: c. 12 km NE of Port Niell, *Hj.Eichler 19143* (AD *n.v.*, PERTH); c. midway between Pinnaroo & Renmark, *N.Hall H80/42* (NSW, PERTH); c. 5 km W of Stenhouse Bay, *J.R.Wheeler 76* (AD *n.v.*, PERTH). Vic.: Mildura, c. 1942, *F.Robbins* (MEL); Miram South Dam Wildlife Res., *A.C.Beauglehole 84141* (MEL *n.v.*, PERTH).

Notes

This species is readily recognised by its rigid, striate, spinose branches which are normally devoid of phyllodes. Its flower-heads are normally sessile, but the peduncles occasionally reach 6 mm long, *fide* D.J.E.Whibley & D.E.Symon, *Acacias S. Australia* 2nd edn, 44 (1992).

The inflorescence arrangement (which is an extremely reduced 1-headed raceme), peduncular bracts, bracteoles, united sepals and carpological features suggest this species is nearest the '*A. pravifolia* group', despite its unusual vegetative characteristics.

FOA Reference

Data derived from *Flora of Australia* Volumes 11A (2001), 11B (2001) and 12 (1998), products of ABRS, ©Commonwealth of Australia

Author

B.R.Maslin

Minor edits by J.Rogers

This identification key and fact sheets are available as a mobile application:



Australian Government
Department of the Environment and Energy



Department of
Biodiversity, Conservation
and Attractions
Western Australian Herbarium



Australian
Biological
Resources
Study



URL: <https://keys.lucidcentral.org/keys/v3/wattle>
Copyright 2018. All rights reserved.