

# WATTLE

## *Acacias of Australia*

### *Acacia resinosa* R.S.Cowan & Maslin



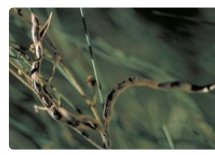
Source: WorldWideWattle ver. 2.  
Published at: [www.worldwidewattle.com](http://www.worldwidewattle.com)  
B.R. Maslin



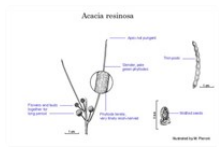
Source: WorldWideWattle ver. 2.  
Published at: [www.worldwidewattle.com](http://www.worldwidewattle.com)  
B.R. Maslin



Source: WorldWideWattle ver. 2.  
Published at: [www.worldwidewattle.com](http://www.worldwidewattle.com)  
B.R. Maslin



Source: WorldWideWattle ver. 2.  
Published at: [www.worldwidewattle.com](http://www.worldwidewattle.com)  
B.R. Maslin



Source: WorldWideWattle ver. 2.  
Published at: [www.worldwidewattle.com](http://www.worldwidewattle.com)  
See illustration.



Acacia resinosa occurrence map.  
Occurrence map generated via Atlas of Living  
Australia (<https://www.ala.org.au>).

### Family

Fabaceae

### Distribution

Widespread and discontinuous, occurring near Gutha, Wubin–Wongan Hills, near Koolyanobbing, Southern Cross and Karonie and also scattered from near Kulin eastwards to near Ponier Rock, W.A.

### Description

Aromatic, rounded shrub 1–3 m high. Branchlets glabrous, resinous, with resin encrusting entire surface or confined to ribs. Phyllodes ascending to erect, often ±slender, straight to shallowly curved, terete to subterete, mostly 3–8 cm long, 0.5–1 mm diam., innocuous with a straight or shortly curved to uncinat tip, glabrous, with ±16 plane close nerves. Inflorescences simple; peduncles (2–) 4–8 (–9) mm long, glabrous or sometimes appressed-puberulous, resinous; heads globular, 3.5–4 mm diam., 18–37-flowered, golden, resinous. Flowers 5-merous; sepals united. Pods linear, slightly constricted between and slightly raised over seeds, to 7 cm long, 2–3.5 mm wide, firmly chartaceous to thinly coriaceous, glabrous, resinous. Seeds longitudinal, elliptic, c. 3.2 mm long, glossy, mottled; aril white.

### Habitat

Grows in clay, loam and sand on flats, in low open woodland, open scrub, tall shrubland, tall open shrubland and open heath.

### Specimens

W.A.: 7 km SW of Ponier Rock, c. 72 km S of Balladonia Motel, Eyre Hwy, *K.Newbey 7356* (PERTH); Wongan Hills Experimental Farm, Craig Rd, *C.M.Parker 210* (AD, CANB, PERTH); 14 km NE of Wubin on road to Mount Magnet, *P.G.Wilson 6476* (AD, CANB, K, MEL, PERTH).

### Notes

Affinities uncertain but perhaps related to *Acacia sp. Goodlands* (B.R.Maslin 7761). Superficially similar to *A. coolgardiensis* which is recognised by its ±sessile heads, terete pods and non-mottled seeds, and *A. incognita*.

### FOA Reference

Data derived from *Flora of Australia* Volumes 11A (2001), 11B (2001) and 12 (1998), products of ABRS, ©Commonwealth of Australia

### Author

Minor edits by B.R.Maslin & J.Reid

R.S.Cowan

This identification key and fact sheets are available as a mobile application:



Australian Government  
Department of the Environment and Energy



Department of  
Biodiversity, Conservation  
and Attractions  
Western Australian Herbarium



Australian  
Biological  
Resources  
Study



POWERED BY  
LUCID®

URL: <https://keys.lucidcentral.org/keys/v3/wattle>  
Copyright 2018. All rights reserved.