

# WATTLE

## Acacias of Australia

### *Acacia palustris* Luehm.



Source: WorldWideWattle ver. 2.  
Published at: [www.worldwidewattle.com](http://www.worldwidewattle.com)  
B.R. Maslin



Source: WorldWideWattle ver. 2.  
Published at: [www.worldwidewattle.com](http://www.worldwidewattle.com)  
J. & M. Simmons



Source: WorldWideWattle ver. 2.  
Published at: [www.worldwidewattle.com](http://www.worldwidewattle.com)  
J. & M. Simmons



Source: WorldWideWattle ver. 2.  
Published at: [www.worldwidewattle.com](http://www.worldwidewattle.com)  
J. & M. Simmons



Source: WorldWideWattle ver. 2.  
Published at: [www.worldwidewattle.com](http://www.worldwidewattle.com)  
B.R. Maslin



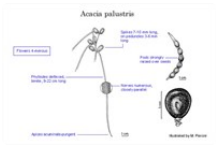
Source: Australian Plant Image Index (dig.8070).  
ANBG © M. Fagg, 2009



Source: Australian Plant Image Index (dig.8071).  
ANBG © M. Fagg, 2009



Source: Australian Plant Image Index (dig.8072).  
ANBG © M. Fagg, 2009



Source: WorldWideWattle ver. 2.  
Published at: [www.worldwidewattle.com](http://www.worldwidewattle.com)  
See illustration.



Acacia palustris occurrence map.  
Occurrence map generated via Atlas of Living  
Australia (<https://www.ala.org.au>).

### Common Name

Needlewood

### Family

Fabaceae

### Distribution

Discontinuous, occurring on Pingandy Stn (Ashburton R.) and from Errabiddy Stn (near Gascoyne R.) S to Murgoo Stn (Murchison R.), north-western W.A.

### Description

Shrub or tree 2–4 m high, somewhat gnarled. Branchlets glabrous. Phyllodes vertically deflexed, straight, terete, 9–22 cm long, 1–1.5 mm diam., long-tapering acuminate, pungent, rigid, glabrous, with  $\pm 16$  closely parallel,  $\pm$ raised nerves. Inflorescences simple, 2 per axil; peduncles 3–6 mm long, glabrous; spikes 7–10 mm long, 4–5 mm diam., densely flowered. Flowers 4-merous; sepals free. Pods linear, strongly raised over and  $\pm$ constricted between seeds, slightly curved, to 16.5 cm long, 7.5–8 mm wide, thin-crustaceous, irregularly longitudinally striate, glabrous. Seeds longitudinal, broadly elliptic, 6.5–7.5 mm long, dull, dark brown to black; aril minute.

### Habitat

Usually grows on loamy alluvial plains in shrubland, often with mulga group (*Acacia aneura* and its allies).

### Specimens

W.A.: 3 km ESE of Murgoo Stn HS, *R.J.Cranfield* 5230 (PERTH); Meka Stn, *A.A.Mitchell* 893 (K, MEL, PERTH); 20 km S of Errabiddy HS, *A.A.Mitchell* 1557 (PERTH); Pingandy Stn, 1972, *M.Scott* (PERTH).

### Notes

Very distinctive on account of its vertically deflexed, terete phyllodes. Relationships uncertain.

### FOA Reference

Data derived from *Flora of Australia* Volumes 11A (2001), 11B (2001) and 12 (1998), products of ABRS, ©Commonwealth of Australia

### Author

R.S.Cowan

Minor edits by B.R.Maslin

This identification key and fact sheets are available as a mobile application:



Australian Government  
Department of the Environment and Energy



Department of  
Biodiversity, Conservation  
and Attractions  
Western Australian Herbarium



Australian  
Biological  
Resources  
Study



URL: <https://keys.lucidcentral.org/keys/v3/wattle>  
Copyright 2018. All rights reserved.