

WATTLE

Acacias of Australia

Acacia lineolata Benth. subsp. *lineolata*



Source: WorldWideWattle ver. 2.
Published at: www.worldwidewattle.com
B.R. Maslin



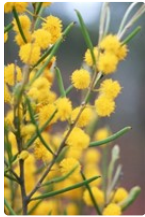
Source: WorldWideWattle ver. 2.
Published at: www.worldwidewattle.com
B.R. Maslin



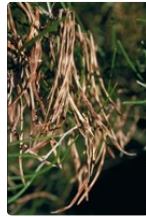
Source: WorldWideWattle ver. 2.
Published at: www.worldwidewattle.com
B.R. Maslin B.R. Maslin



Source: WorldWideWattle ver. 2.
Published at: www.worldwidewattle.com
B.R. Maslin



Source: WorldWideWattle ver. 2.
Published at: www.worldwidewattle.com
B.R. Maslin



Source: WorldWideWattle ver. 2.
Published at: www.worldwidewattle.com
B.R. Maslin



Source: WorldWideWattle ver. 2.
Published at: www.worldwidewattle.com
See illustration.



Acacia lineolata subsp. lineolata occurrence map.
Occurrence map generated via Atlas of Living Australia (<https://www.ala.org.au>).

Family

Fabaceae

Distribution

Occurs from Kalbarri Natl Park (c. 100 km due N of Geraldton) SE to Pingrup (c. 50 km due N of Ongerup) in south-western W.A.

Description

Phyllodes **linear** to **linear-oblongeolate**, normally **straight** to shallowly **incurved**, often sigmoidally, occasionally **?terete**, (2-) 3-7 (-10) cm long, (1-) 2-3 (-4) mm wide; apex **acute** to shortly **acuminate**, **straight** to shallowly **curved** or **?uncinate**, **innocuous** to coarsely (rarely sharply) **pungent** pointed. Peduncles 2-6 mm long. Seeds glossy, brown-black.

Habitat

Grows in sandy or stony, often saline, loam in association with *Casuarina* spp., *Halosarcia* and eucalypts.

Specimens

W.A.: Pingrup, *W.E.Blackall 2987* (PERTH); 14.1 km from junction of Gorge Rd with Ajana-Kalbarri road, Kalbarri Natl Park, *R.S.Cowan A821 & R.A.Cowan* (CANB, K, MEL, NSW, NY, PERTH, US); Wilroy, *J.Galbraith 347* (PERTH); 32 km W of Kununoppin towards Wyalkatchem, *B.R.Maslin 3400* (CANB, K, NSW, P, PERTH).

Notes

A variant in the north-central part of the range has very narrow phyllodes (1-1.5 mm wide, 3.5-7 cm long) which vary from flat to subterete: e.g. 14 km E of Kulja towards Beacon, *B.R.Maslin 3975* (CANB, K, MEL, NSW, PERTH).

Superficially similar to *A. ancistrophylla* var. *lissophylla*. Can easily be confused with *A. enervia* subsp. *explicata* when the two are sympatric.

FOA Reference

Data derived from *Flora of Australia* Volumes 11A (2001), 11B (2001) and 12 (1998), products of ABRS, ©Commonwealth of Australia

Author

R.S.Cowan

This identification key and fact sheets are available as a mobile application:



Australian Government
Department of the Environment and Energy



Department of
Biodiversity, Conservation
and Attractions
Western Australian Herbarium



Australian
Biological
Resources
Study



URL: <https://keys.lucidcentral.org/keys/v3/wattle>
Copyright 2018. All rights reserved.