

WATTLE

Acacias of Australia

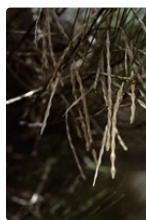
Acacia hopperiana Maslin



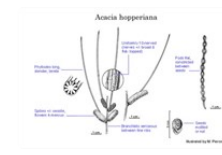
Source: WorldWideWattle ver. 2.
Published at: www.worldwidewattle.com
B.R. Maslin



Source: WorldWideWattle ver. 2.
Published at: www.worldwidewattle.com
B.R. Maslin



Source: WorldWideWattle ver. 2.
Published at: www.worldwidewattle.com
B.R. Maslin



Source: WorldWideWattle ver. 2.
Published at: www.worldwidewattle.com
See illustration.



Acacia hopperiana occurrence map.
Occurrence map generated via Atlas of Living
Australia (<https://www.ala.org.au>).

Family

Fabaceae

Distribution

Occurs in the Carnamah–Watheroo area, N of Wubin and from Nerren Nerren Stn S to near Murchison River, N of Geraldton, in south-western W.A.

Description

Shrub 1–3 m high, occasionally **tree** to 4 m high. **Branchlets** **sericeous** between ribs at extremities, **glabrescent**. Phyllodes **ascending** to **erect**, **straight** to shallowly **incurved**, **terete**, 6–14 cm long, 0.7–1 mm wide, **innocuous** to coarsely **pungent**, subrigid, light green, **appressed-puberulous** when young, **glabrous** or hairs confined to furrows with age; nerves 10, broad, \pm flat-topped and of uniform width, each separated by a shallow, narrow, dark-coloured (when dry) furrow; not prominent, sometimes absent, 10–60 mm above **pulvinus**. Inflorescences **simple**, 1 or 2 per **axil**; peduncles 1–3 mm long, **appressed-hairy**; spikes 10–20 (25) mm long, subdensely flowered, golden. Flowers **4-merous**; sepals 1/2–3/4 united. Pods flat, moderately to deeply constricted between seeds, 5–9 cm long, 2–3 mm wide, thinly **coriaceous-crustaceous** to firmly **chartaceous**, greyish brown, **glabrous** or antrorsely **strigulose**. Seeds **longitudinal**, **oblong-elliptic** or **discoid**, 2–3 mm long, glossy, **mottled** or not **mottled**; **aril** \pm conical, white.

Habitat

Grows in sand on plains or in swales between sand dunes, occasionally found in loam near rock.

Specimens

W.A.: 20 km ESE of Coorow, 9 Aug. 1987, *A.Doley* (PERTH); 70 km N of Northampton, *R.Hnatiuk 760473* (PERTH); Buntine Rock, NNW of Wubin, *B.R.Maslin 7605* (CANB, K, MEL, PERTH); Nerren Nerren Stn, 6 km N of Kalbarri Natl Park, *S.Patrick & A.Brown SP1999* (PERTH).

Notes

Specimens of *A. hopperiana* from N of Geraldton have clearly discoid seeds with readily detaching arils, while those S of Geraldton have obloid-ellipsoid seeds with arils not so readily detaching.

Most closely related to, and easily confused with, *A. isoneura* which is most reliably distinguished by its 8-nerved phyllodes with obscure gland 0–3 mm above the pulvinus, reddish brown pods and ellipsoid to obloid-ellipsoid seeds (never discoid).

This species was noted under *A. isoneura* by A.R.Chapman & B.R.Maslin, *Fl. Australia* 11B: 355 (2001) but was formally recognized too late to be fully described in that volume.

FOA Reference

Data derived from *Flora of Australia* Volumes 11A (2001), 11B (2001) and 12 (1998), products of ABRS, ©Commonwealth of Australia

Author

B.R.Maslin, J.Reid

This identification key and fact sheets are available as a mobile application:



Australian Government
Department of the Environment and Energy



Department of
Biodiversity, Conservation
and Attractions
Western Australian Herbarium



Australian
Biological
Resources
Study



URL: <https://keys.lucidcentral.org/keys/v3/wattle>
Copyright 2018. All rights reserved.