

WATTLE

Acacias of Australia

Acacia cyperophylla var. *omearana* Maslin



Source: WorldWideWattle ver. 2.
Published at: www.worldwidewattle.com
B.R. Maslin



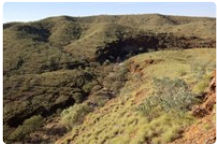
Source: WorldWideWattle ver. 2.
Published at: www.worldwidewattle.com
B.R. Maslin



Source: WorldWideWattle ver. 2.
Published at: www.worldwidewattle.com
B.R. Maslin



Source: WorldWideWattle ver. 2.
Published at: www.worldwidewattle.com
B.R. Maslin



Source: WorldWideWattle ver. 2.
Published at: www.worldwidewattle.com
B.R. Maslin



Source: WorldWideWattle ver. 2.
Published at: www.worldwidewattle.com
B.R. Maslin



Source: WorldWideWattle ver. 2.
Published at: www.worldwidewattle.com
B.R. Maslin



Source: WorldWideWattle ver. 2.
Published at: www.worldwidewattle.com
B.R. Maslin



Source: WorldWideWattle ver. 2.
Published at: www.worldwidewattle.com
See illustration.



Acacia cyperophylla var. *omearana* occurrence map.
Occurrence map generated via Atlas of Living Australia (<https://www.ala.org.au>).

Common Name

O'Meara's Minni Ritchi, Weeping Red Mulga, Omeara's Red Mulga

Family

Fabaceae

Distribution

Known from very few populations in the eastern Pilbara, N of the Hamersley Ra., W.A.

Description

Branchlets and non-rigid phyllodes pendulous, terete to subterete, a few almost flat; pods 4–13 cm long, 7–9 mm wide.

Habitat

Grows along drainage lines in stony, skeletal sandy alluvium, in open low woodland of *Eucalyptus camaldulensis*.

Specimens

W.A.: type locality, *L.Thomson LXT1151* (PERTH); *loc. id.*, *P.G.Wilson 992 & R.Rowe* (BRI, CANB, MO, NSW, PERTH).

Notes

Variety *omearana* is a shapely, attractive tree which is increasingly used as an ornamental in inland areas on account of its 'Minni Ritchi' bark and its pendulous foliage.

FOA Reference

Data derived from *Flora of Australia* Volumes 11A (2001), 11B (2001) and 12 (1998), products of ABRS, ©Commonwealth of Australia

Author

Dr M.D.Tindale and Dr P.G.Kodala with the assistance of M.Bedward, S.J.Davies, C.Herscovitch, D.A.Keith and/or D.A.Morrison

Minor edits by B.R.Maslin & J.Reid

This identification key and fact sheets are available as a mobile application:



Australian Government
Department of the Environment and Energy



Department of
Biodiversity, Conservation
and Attractions
Western Australian Herbarium



Australian
Biological
Resources
Study



URL: <https://keys.lucidcentral.org/keys/v3/wattle>
Copyright 2018. All rights reserved.