

WATTLE

Acacias of Australia

Acacia cardiophylla A.Cunn. ex Benth.



Source: Australian Plant Image Index (a.19305).
ANBG © M. Fagg, 1977



Source: Australian Plant Image Index (a.9930).
ANBG © M. Fagg, 1993



Source: Australian Plant Image Index (x.1296).
ANBG © M. Fagg, 1999



Source: Australian Plant Image Index (a.24).
ANBG © M. Fagg, 1973



Source: Australian Plant Image Index (x.1297).
ANBG © M. Fagg, 1999



Source: Australian Plant Image Index (dig.16887).
ANBG © M. Fagg, 2010



Source: Australian Plant Image Index (dig.16888).
ANBG © M. Fagg, 2010



Source: Australian Plant Image Index (dig.1936).
ANBG © M. Fagg, 2006



Source: Australian Plant Image Index (dig.1937).
ANBG © M. Fagg, 2006



Source: Australian Plant Image Index (dig.1938).
ANBG © M. Fagg, 2006



Source: Australian Plant Image Index (dig.4193).
ANBG © M. Fagg, 2007



Source: Australian Plant Image Index (dig.4194).
ANBG © M. Fagg, 2007



Source: Australian Plant Image Index (dig.34561).
ANBG © M. Fagg, 2014



Source: Australian Plant Image Index (dig.34562).
ANBG © M. Fagg, 2014



Source: Australian Plant Image Index (dig.34563).
ANBG © M. Fagg, 2014



Source: Australian Plant Image Index (a.9931).
ANBG © M. Fagg, 1989



Source: Australian Plant Image Index (a.12004).
ANBG © M. Fagg, 1997



Source: Australian Plant Image Index (a.12005).
ANBG © M. Fagg, 1997



Source: Australian Plant Image Index (dig.18758).
ANBG © M. Fagg, 2010



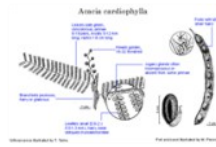
Source: Australian Plant Image Index (dig.18757).
ANBG © M. Fagg, 2010



Source: Australian Plant Image Index (dig.20624).
ANBG © M. Fagg, 2011



Source: Australian Plant Image Index (dig.20625).
ANBG © M. Fagg, 2011



Source: WorldWideWattle ver. 2.
Published at: www.worldwidewattle.com



Source: WorldWideWattle ver. 2.
Published at: www.worldwidewattle.com



Acacia cardiophylla occurrence map.
Occurrence map generated via Atlas of Living Australia (<https://www.ala.org.au>).

Common Name

Wyalong Wattle

Family

Fabaceae

Distribution

Occurs on the Central and South Western Slopes and near Lake Cargellico, South Western Plains, N.S.W.

Description

Flat-topped **shrub** or **tree** 1–3.3 m high, many-stemmed. Bark smooth, grey or **mottled** with brown. **Branchlets terete** or obscurely angled, **pruinose**, with spreading ±stiff cream-coloured hairs, or **glabrous**. Young foliage-tips cream-coloured, **villous**. Leaves subcoriaceous, pale green, subsessile with basal **pinnae** arising immediately or to 2 mm above **pulvinus**, with a small **orbicular gland** at insertion of basal pair of **pinnae**; **rachis** 1–6 cm long, with minute **orbicular jugary** glands often inconspicuous or missing from some pairs of **pinnae**, **interjugary** glands absent; **pinnae** (3–) 8–19 pairs, (0.2–) 0.5–1.2 (–1.5) cm long, with lower pairs shorter than others; pinnules 4–14 pairs, narrowly **ovate**, **orbicular** or **oblong**, 0.8–2 (–2.5) mm long, 0.5–1 (–1.3) mm wide, **hispidulous** especially below and on margins, obliquely subcordate at base, **obtuse**, broadly **rounded** or subacute at apex. Inflorescences in **axillary** racemes, or **axillary** or terminal false-panicles; **axis** zig-zagged; peduncles 1–3 mm long, hairy or rarely **glabrous**. Heads 3–5 mm diam., 15–40-flowered, golden. Pods **straight** to slightly **curved**, 1.5–11.5 cm long, 4–6.5 mm wide, subcoriaceous, blue-black or dark brown, paler between seeds, with stiff silver hairs. $2n = 26$, C.Hamant *et al.*, *Taxon* 24: 669 (1975).

Phenology

Flowers Aug.–Nov.; fruits Oct.–Feb.

Habitat

Grows in mallee communities, on open plains, foothills or ridges, especially in moist situations and on stream banks, in red sandy loams or gravelly clays.

Specimens

N.S.W.: 6 mile peg W of West Wyalong, *E.F.Constable 7274* (NSW, TL); 5 miles [8.1 km] W of West Wyalong, 14 June 1967, *M.D.Tindale s.n.* & *J.Lanyon* (AD, CANB, E, K, NSW, US, Z) and *M.D.Tindale s.n.* (NSW63781).

Notes

May be confused with *A. pubescens* with which it sometimes hybridizes.

A widely cultivated shrub with attractive foliage, adaptable to a variety of situations and soils. *Acacia cardiophylla* 'Gold Lace' is a prostrate registered cultivar, fide M.Hitchcock, *Australian Plants* 22: 325 (2004). *Acacia cardiophylla* has the capacity to become naturalised as the seed readily germinates in disturbed sites. It has become established in Wantirna, an outer Melbourne suburb, Vic., fide T.J.Entwistle *et al.* *Fl. Victoria* 3: 594 (1996).

FOA Reference

Data derived from *Flora of Australia* Volumes 11A (2001), 11B (2001) and 12 (1998), products of ABRS, ©Commonwealth of Australia

Author

M.D.Tindale, P.G.Kodala

Minor edits by B.R.Maslin & J.Reid

This identification key and fact sheets are available as a mobile application:



Australian Government
Department of the Environment and Energy



Department of
Biodiversity, Conservation
and Attractions
Western Australian Herbarium



Australian
Biological
Resources
Study



URL: <https://keys.lucidcentral.org/keys/v3/wattle>

Copyright 2018. All rights reserved.