

Eucalyptus kochii subsp. *amaryssia*

Classification

Eucalyptus | Symphyomyrtus | Bisectae | Destitutae | Subulatae | Oleaginae

Nomenclature

Eucalyptus kochii* subsp. *amaryssia Nicolle, *Austral. Syst. Bot.* 18 (6) 546 (2005).

T: Western Australia: ca. 35 miles west of Sandstone towards Paynes Find, *M.I.H. Brooker* 2420, 14 January 1970; holo: PERTH; iso: MEL, NSW, NT.

Eucalyptus oleosa f. *lucida* C.A. Gardner [nom. illeg.] T: none cited.

Description

Mallee to 8 m tall or rarely a taller tree to 12 m. Forming a lignotuber.

Bark usually rough over most of the stems, flaky fibrous, sometimes fissured, usually firmly held, light grey to brown, smooth bark above grey over red-brown.

Branchlets lacking oil glands in the pith.

Juvenile growth (coppice or field seedlings to 50 cm): stems round in cross-section; juvenile leaves alternate and shortly petiolate, narrowly lanceolate, base tapering, margin entire, apex acute, dull blue-green, maturing to glossy green.

Adult leaves alternate, petiole 0.7–1.5 cm long; blade linear to narrowly lanceolate, 6–12 cm long, 0.5–1.5 cm wide, base tapering to petiole, concolorous, very glossy, green, side-veins at an acute angle to midrib, densely to very densely reticulate, intramarginal vein parallel to and just within margin, oil glands numerous and mostly intersectional.

Inflorescence axillary unbranched, peduncles 0.3–0.8 cm long, buds 9 to ?15, rarely 7 per umbel, pedicellate, pedicels 0.1–0.2 cm long. **Mature buds** obovoid, scar present, operculum rounded, stamens irregularly flexed, anthers adnate to weakly versatile, basifixed, globoid, dehiscing by lateral pores, style long, stigma tapered, locules 3 or 4, the placentae each with 4 vertical ovule rows. Flowers ? white.

Fruit pedicellate, pedicels 0.1–0.2 cm long, urceolate to barrel-shaped, 0.5–0.9 cm long, 0.5–0.7 cm wide, disc descending, valves 3 or 4, valve tips strongly exerted due to fragile style remnants.

Seeds light brown to grey, 1–1.5 mm long, ovoid or flattened-ovoid, occasionally with shallow longitudinal furrows on otherwise smooth dorsal surface, hilum ventral.

Cultivated seedlings (measured at node 10): cotyledons Y-shaped (bisected); stems rounded in cross-section; leaves opposite, sessile to very shortly petiolate and linear to narrowly lanceolate for the first 6 to 9 nodes then alternate, subsessile to shortly petiolate and linear to narrowly lanceolate further up the stem, 5–10 cm long, 0.3–1 cm wide, dull blue-green.

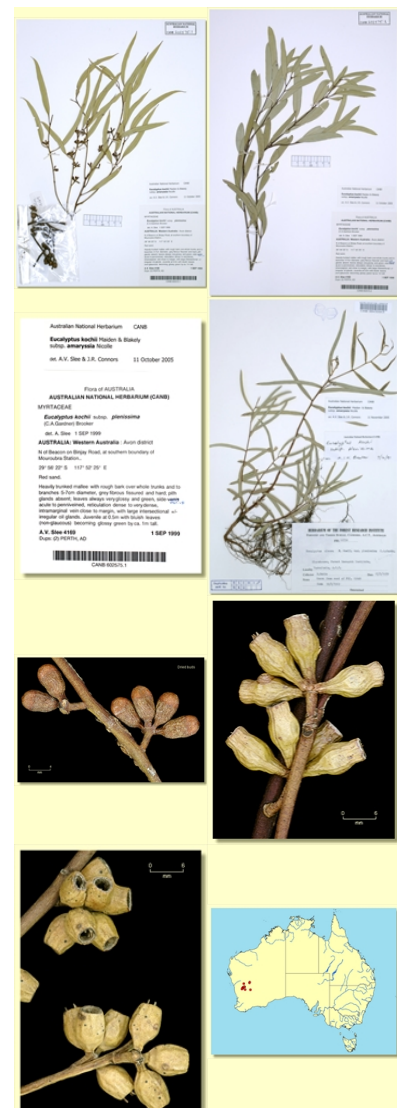
Flowering Time

Flowering time unknown.

Notes

Eucalyptus kochii is a mallee species widespread in south-western Western Australia from near Naremben, north to almost Kalbarri, then extending eastwards into the Sandstone–Menziess–Yellowdine area. The bark is rough to the small branches and firm on most of the stems. The juvenile leaves are relatively narrow, the peduncles and pedicels are relatively short and the fruit normally slightly urceolate to barrel-shaped.

Eucalyptus kochii belongs in *Eucalyptus* subgenus *Symphyomyrtus* section *Bisectae* subsection *Destitutae* because buds have two opercula, cotyledons are Y-shaped and branchlets lack oil glands in the pith. Within this subsection *E. kochii* is part of a large taxonomic series *Subulatae* further characterised by globoid basifixed anthers, grey smooth seeds with shallow longitudinal furrows, and fruit with persistent exerted style remnants. Series *Subulatae* is divided principally into four subseries based on the juvenile leaves, one with spiral, crowded seedling phyllotaxis (subseries *Spirales*), another with decussate and decurrent seedling leaves (subseries *Decurrentes*), another with decussate non-decurrent seedling leaves (subseries *Decussatae*), and a fourth to which *E. kochii* belongs with disjunct, petiolate seedling leaves (subseries *Oleaginae*).



Within the group, *E. kochii* is probably closest to *E. longissima*. *E. longissima* can be distinguished by its often large stature, the small globose fruit and the long slender peduncles and pedicels. *E. ultima* and *E. eremicola*, the other members of the subseries *Oleaginae*, are either smooth-barked or have a small amount of rough bark at the base of the trunks; *E. kochii* is fully rough-barked.

There are five subspecies:

E. kochii* subsp. *kochii

Occurring in the northern wheatbelt only, restricted to the area north of Dowerin towards Perenjori and west towards Watheroo. It is distinguished from subsp. *plenissima* and subsp. *amaryssia* by the conical opercula (rounded in subsp. *plenissima* and subsp. *amaryssia*) and the very high oil content of the leaves. It is distinguished from subsp. *borealis* and subsp. *yellowdinensis* by the duller adult leaves (usually very glossy in subsp. *borealis* and subsp. *yellowdinensis*).

E. kochii* subsp. *amaryssia

Of scattered occurrence in the northern goldfields south from Meekatharra to the Die Hardy Range – Mt Jackson area, as far east as the Menzies area and west to the Pindar area. Very closely related to subsp. *plenissima*, with both possessing rounded opercula. It differs by having very glossy adult leaves.

E. kochii* subsp. *borealis

Occurring from Kalbarri National Park to just south of Morawa. Distinguished within the group by its slightly broader, very glossy adult leaves and by its conical opercula.

E. kochii* subsp. *plenissima

A mallee occurring in the central wheatbelt, extending into the drier country further east. It is easily distinguished from subsp. *kochii*, subsp. *borealis* and subsp. *yellowdinensis* by the hemispherical opercula. It is very close to subsp. *amaryssia*, with both possessing round opercula. Subsp. *amaryssia* differs by having very glossy adult leaves. On distillation and analysis the leaves are found to be very low in essential oils.

E. kochii* subsp. *yellowdinensis

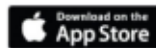
Of scattered occurrence in the Bodallin to Boorabin area and possibly further south into the Bremer Range area. Like subsp. *borealis*, the adult leaves are glossy and the buds have sharply conical opercula. Subspecies *yellowdinensis* is distinguished by having narrower adult leaves, usually narrower than 0.9 cm.

Origin of Name

Eucalyptus kochii: after Max Koch (1854–1925). Max Koch was a farmer and sawmiller from Western Australia. He was highly regarded by botanists of his time for his plant and seed collections.

subsp. *amaryssia*: Greek *amarysso* - sparkle, referring to the highly glossy adult leaves.

Copyright © CANBR 2020, all rights reserved.



Web edition hosted at <https://apps.lucidcentral.org/euclid>